

www.gripton.co.uk

Gripton Lifting Gear LLP. UK.

Mission

To be a globally leading company, specialized in the lifting gear market, exceeding customer expectations by providing the best possible cost effective quality products and service available.

Vision

- To be a leading source of a complete range of lifting gear.
- To ensure continuous quality control & development.
- To be in-line with the most innovative technologies available in the lifting gear market.
- To remain cost-effective with all of our products.

Values

- | | |
|------------------|--------------|
| • Leadership | • Innovation |
| • Passion | • Quality |
| • Accountability | • Integrity |





Contents

Section - i	
Company profile	01
Section - ii	
Grade 80 chain and accessories	02
Section - iii	
Material Handling Equipment	12
Section - iv	
Shackles	21
Section - v	
Cargo securing equipment	25
Section - vi	
Wire rope accessories	27
Section - vii	
Webbing slings	28

Profile

Gripton is a U.K. – based company involved in the manufacture of high quality lifting gear. We specialize in controlling all stages of the production process, from sourcing the correct high grade raw materials to providing an aesthetically pleasing finish to the products. All of this is for the sake of providing only the most cost-effective and highest quality lifting gear available in the market.

Our teams of approved engineers, who have a collective experience of approximately 50 years in the lifting equipment industry, combined with professional quality, ensure that all of our lifting gear is tested and certified before dispatch. This makes our lifting gear in-line with only the latest British and other essential standards.

In addition, of paramount importance, is our safety measures that meet leading safety standards at all of our facilities. Our company recognizes the importance of occupational safety in which ever market it operates in, whether it is directly or through an appointed agent.

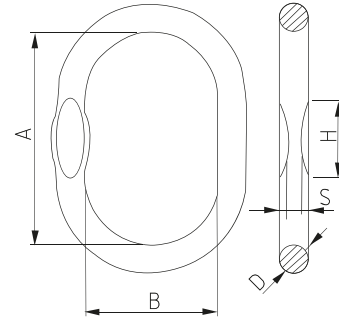
Finally, we ensure all of our customers, potential & existing that our products will exceed in terms of delivery time, quality and price. More importantly, we aim to establish long term business relationships and to continue to meet and exceed our partner's expectation in the years ahead.



Gripton Lifting Gear, U.K.

Grade 80 chain and accessories

1200 - Master link



Description:

- Designed for use with steel wire rope or grade 80 alloy steel chain
- For overhead lifting application
- Size, CE, WLL, Traceability code & GRIPTON or GPT embossed

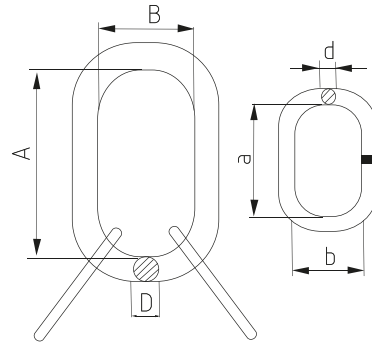
Standard: EN 1677
 Material: Alloy steel
 Factor of safety: 4 to 1
 Construction: Quenched & tempered
 Proof load: 2 times of working load limit
 Finish: Powder coated

Master link with flat

Part No.	Item No.	WLL (T)	A (mm)	B (mm)	D (mm)	S (mm)	H (mm)	Weight (Kg)
1200.0113	13B5	2.6	95	51	13	7	50	0.3
1200.0013	13B6	2.4	115	60	13	7	50	0.35
1200.0016	16B6	3.8	120	70	16	9	70	0.6
1200.0116	16B7	2.8	190	100	16	9	70	0.86
1200.0020	20B6	6.4	150	80	20	11	50	1.1
1200.0120	20B7	5.8	170	90	20	11	70	1.25
1200.0022	22B6	7.6	170	90	22	12	70	1.53
1200.0122	22B7	6.4	210	110	22	12	70	1.83
1200.0025	25B6	10	190	100	25	13	80	2.21
1200.0028	28B6	12.7	210	110	28	15	80	3.06
1200.0128	28B7	10.5	270	140	28	15	70	3.81
1200.0032	32B6	15.2	270	140	32	17	70	5.05
1200.0038	38B6	25.1	270	140	38	20	55	7.3
1200.0138	38B7	17	420	220	38	20	55	10.78
1200.0045	45B6	34	320	170	45	24	60	12.2
1200.0145	45B7	24.5	470	250	45	24	60	17.06
1200.0050	50B6	40	380	200	50	-	-	17.65
1200.0060	60B6	58	430	220	60	-	-	28.85
1200.0070	70B6	84	500	250	70	-	-	45.48

Grade 80 chain and accessories

1210 - Master link assembly



Description:

- Designed for use with steel wire rope or grade 80 alloy steel chain
- For overhead lifting application
- Size, CE, WLL, Traceability code & GRIPTON or GPT embossed

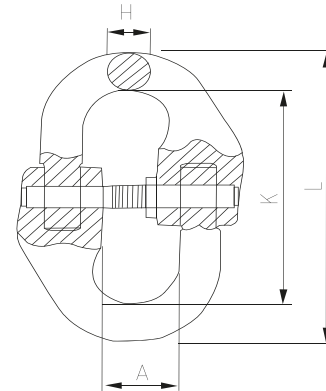
Standard:	EN 1677
Material:	Alloy steel
Factor of safety:	4 to 1
Construction:	Quenched & tempered
Proof load:	2 times of working load limit
Finish:	Powder coated

Master link assembly

Part No.	Item No.	WLL (T)	A (mm)	B (mm)	D (mm)	a (mm)	b (mm)	d (mm)	Weight (Kg)
1210.0020	Q20B	5.8	170	90	20	120	70	16	2.41
1210.0022	Q22B	7.6	170	90	22	150	80	20	3.77
1210.0025	Q25B	10	190	100	25	150	80	20	4.45
1210.0028	Q28B	12.7	210	110	28	170	90	22	6.12
1210.0032	Q32B	15.2	270	140	32	190	100	25	9.47
1210.0038	Q38B	25	270	140	38	270	140	32	17.4
1210.0045	Q45B	34	320	170	45	270	140	38	26.76
1210.0050	Q50B	40	380	200	50	270	140	38	33.2
1210.0060	Q60B	58	430	220	60	380	200	50	66
1210.0070	Q70B	84	500	250	70	430	220	60	103

Grade 80 chain and accessories

8010 - Connecting link



Description:

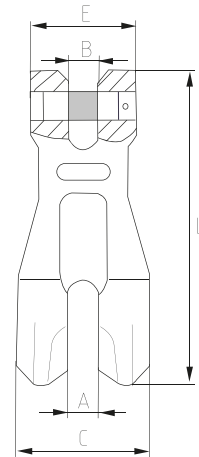
- Designed for use with grade 80 alloy steel chain
- Used for connecting alloy steel chain to components
- Size, CE, WLL, Traceability code & GPT embossed

Standard:	EN 1677
Material:	Forged alloy steel
Factor of safety:	4 to 1
Construction:	Quenched & tempered
Proof load:	2 times of working load limit
Finish:	Powder coated

Connecting link						
Part No.	WLL (T)	A (mm)	L (mm)	K (mm)	H (mm)	Weight (Kg)
8010.0078	2	18.00	79.50	62.50	8.5	0.15
8010.0010	3.15	25.00	93.00	68.00	10.8	0.30
8010.0013	5.3	29.00	117.00	87.00	15	0.70
8010.0016	8	34.50	148.00	108.40	19.8	1.10
8010.0020	12.5	41.00	169.50	121.50	24	1.90
8010.0022	15	48.00	193.50	141.50	26	3.20
8010.0026	21.2	57.5	220	158.00	30	4.50

Grade 80 chain and accessories

8090 - Shortening clutch



Description:

- Designed for use with grade 80 alloy steel chain
- Used for shortening or holding required length of chain
- Size, CE, WLL, Traceability code & GRIPTON or GPT embossed

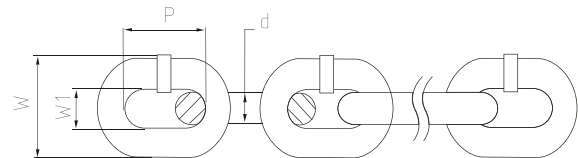
Standard: EN 1677
 Material: Alloy steel
 Factor of safety: 4 to 1
 Construction: Quenched & tempered
 Proof load: 2 times of working load limit
 Finish: Powder coated

Shortening clutch

Part No.	WLL (T)	A (mm)	B (mm)	C (mm)	E (mm)	L (mm)	Weight (Kg)
8090.0078	2	9.5	9.5	45	36	101	0.41
8090.0010	3.15	13	13	55	48	138	0.97
8090.0013	5.3	18	16	75	59	177	2.01
8090.0016	8	21	21	93	73	220	3.32
8090.0020	12.5	22	22	99	78	238	6.20
8090.0022	15	25.5	25.5	118	98	295	8.50

Grade 80 chain and accessories

8000 - Grade 80 - Alloy steel chain



Description:

- Suitable for overhead lifting application
- For use with Grade 80 components
- High tensile steel
- Grade 80 & GPT embossed

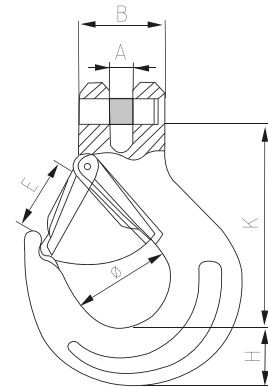
Standard:	EN 818
Material:	Alloy steel
Factor of safety:	4 to 1
Construction:	Quenched & tempered
Proof load:	2.5 times of working load limit
Finish:	Black painted

Grade 80 alloy steel chain

Part No.	Chain dia (mm) d	WLL (Ton)	Test load (kN)	Inside length (mm) P	Outside width (mm) W	Inside width (mm) W1	Weight (Kg/M)
8000.0007	7	1.50	37.00	21	25.9	9.10	1.07
8000.0008	8	2.00	48.00	24	29.6	10.40	1.38
8000.0010	10	3.20	76.00	30	37	13.00	2.20
8000.0013	13	5.4	128	39	48.1	16.9	3.8
8000.0016	16	8	192	48	59.2	20.8	5.63
8000.0020	20	12.5	300	60	74	26	8.6
8000.0022	22	15.3	366	66	81.4	28.6	10.2
8000.0026	26	21.3	510	78	96.2	33.8	14.87

Grade 80 chain and accessories

8015 - Clevis latch hook



Description:

- For use with Grade 80 alloy steel chain
- Suitable for overhead lifting application
- Size, CE, WLL, Traceability code & GRIPTON or GPT embossed

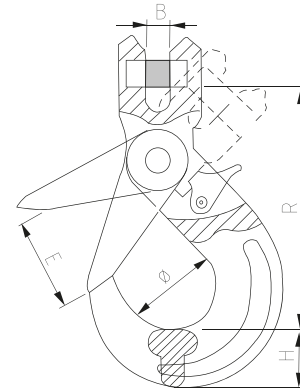
Standard:	EN 1677
Material:	Alloy steel
Factor of safety:	4 to 1
Construction:	Quenched & tempered
Proof load:	2 times of working load limit
Finish:	Powder coated

Clevis latch hook

Part No.	WLL/T	A (mm)	B (mm)	Ø (mm)	H (mm)	K (mm)	E (mm)	Weight (Kg)
8015.00.8	2	9.5	37	37	32.5	85.5	29	0.52
8015.0010	3.15	13	49	46	35	104	39	1.05
8015.0013	5.3	16.5	56.5	56	42.5	128	47	2.00
8015.0016	8	21.5	70.5	60	54	150	55	3.70
8015.0020	12.5	24	77	79	58	180	61	6.00
8015.0022	15	27	91	101	62	213	72	10.40

Grade 80 chain and accessories

8025 - Clevis self locking hook



Description:

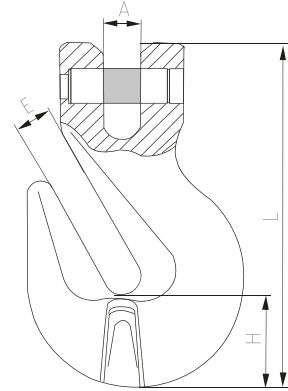
- For use with Grade 80 alloy steel chain
- Positive locking mechanism
- Suitable for overhead lifting application
- Size, CE, WLL, Traceability code & GRIPTON or GPT embossed

Standard: EN 1677
 Material: Alloy steel
 Factor of safety: 4 to 1
 Construction: Quenched & tempered
 Proof load: 2 times of working load limit
 Finish: Powder coated

Clevis self locking hook							
Part No.	WLL/T	E (mm)	B (mm)	H (mm)	Ø (mm)	R (mm)	Weight (Kg)
8025.0078	2	34	9.5	24	46	121	0.80
8025.001	3.15	44	12	28.5	56	146	1.50
8025.0013	5.3	52	15	40	69	182	2.80
8025.0016	8	60	18	50.5	86	218	5.60
8025.002	12.5	83	25	55	100	240	7.50
8025.0022	15	88	25.5	67	98	276.5	11.50

Grade 80 chain and accessories

8095 - Clevis grab hook



Description:

- For use with Grade 80 alloy steel chain
- Used for shortening or holding required length of chain
- Size, CE, WLL, Traceability code & GRIPTON or GPT embossed

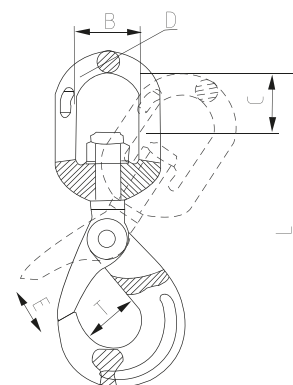
Standard: EN 1677
 Material: Alloy steel
 Factor of safety: 4 to 1
 Construction: Quenched & tempered
 Proof load: 2 times of working load limit
 Finish: Powder coated

Clevis grab hook

Part No.	WLL/T	A (mm)	E (mm)	H (mm)	L (mm)	Weight (Kg)
8095.0007	1.5	10	9.5	23	106.5	0.30
8095.0010	3.15	12.7	13	31	137	0.65
8095.0013	5.3	16.5	16.5	43	184.5	1.70
8095.0016	8	20	20	49	215	2.50
8095.0020	12.5	24	24	58	254	4.25
8095.0022	15.5	27.5	26.5	66	295	6.30

Grade 80 chain and accessories

8035 - Swivel self locking



Description:

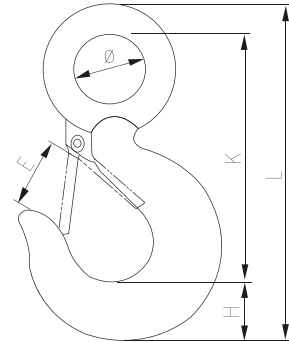
- For use with grade 80 alloy steel chain or steel wire rope
- Swivel eye on top ensures 360° rotation
- Positive locking mechanism
- Size, CE, WLL, Traceability code & GRIPTON or GPT embossed

Standard:	EN 1677
Material:	Alloy steel
Factor of safety:	4 to 1
Construction:	Quenched & tempered
Proof load:	2 times of working load limit
Finish:	Powder coated

Swivel self locking hook								
Part No.	WLL/T	B (mm)	C (mm)	D (mm)	L (mm)	T (mm)	E (mm)	Weight (Kg)
8035.0078	2	35.5	26	12.5	210	46	34	1.10
8035.0010	3.15	42	34	15	247	56	44	2.00
8035.0013	5.3	50	38.5	16	302	69	52	4.00
8035.0016	8	61	55	21.5	383	86	60	7.30
8035.0020	12.5	72	61	26	418	100	83	11.60
8035.0022	15	95	95	33	527	98	88	16.00
8035.0026	21.2	122	115	42	610	110	95.5	21.5

Grade 80 chain and accessories

8045 - Eye latch hook



Description:

- For use with Grade 80 alloy steel chain or steel wire rope
- Suitable for overhead lifting application
- Size, CE, Traceability code, WLL & GRIPTON embossed

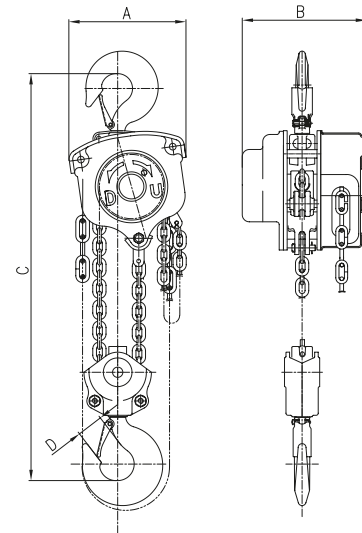
Standard:	EN 1677
Material:	Alloy steel
Factor of safety:	4 to 1
Construction:	Quenched & tempered
Proof load:	2 times of working load limit
Finish:	Powder coated

Eye hook with latch

Part No.	WLL/T	\varnothing (mm)	E (mm)	H (mm)	K (mm)	L (mm)	Weight (Kg)
8045.0112	1.12	19	22	19	80	110	0.28
8045.0200	2	28	25	25	103	140.5	0.65
8045.0315	3.15	31	27.5	28	118	162	0.94
8045.0530	5.3	39	33	35	145	201	1.95
8045.0800	8	51	40	45	180	256	3.77
8045.1250	12.5	62	51	57	230	317	6.80
8045.1500	15	73	57	70	260	360	9.80
8045.2120	21.2	89	75	76	318	434	16.25
8045.3150	31.5	90	98	91	360	495	27.2

Material handling equipment

6130 - Chain block



Description:

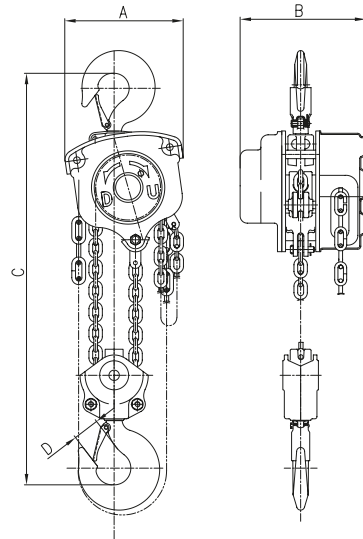
- Compact design & light weight for ease of use
- Heat treated body, shafts & gears for enhanced strength
- Forged lifting and suspension hooks, with safety latches
- CE, Serial number, SWL & H.O.L shown on label and carton

Standard:	EN 13157
Material:	Forged alloy steel
Factor of safety:	4 to 1
Construction:	Quenched & tempered
Proof load:	Individually proof tested to 1.5 time of working load limit
Finish:	Powder coated

Chain block											
Part No.	Rated load (T)	Standard lift (M)	Test load (T)	Effort required at capacity (N)	Load chain diameter (mm)	No. of load chains	A (mm)	B (mm)	C (mm)	Net weight (Kg)	Extra weight per meter of extra lift (Kg)
6130.0005	0.5	3	0.75	262	5.00	1	127	115	288	7	1.5
6130.0010	1	3	1.5	324	6.00	1	156	131	334	10.5	1.8
6130.0015	1.5	3	2.25	395	7.10	1	180	142	415	15.5	2
6130.0020	2	3	3	330	6	2	156	131	459	16	2
6130.0030	3	3	4.5	402	7.1	2	180	142	536	23	3.2
6130.0050	5	3	7.5	430	10	2	230	171	660	39	5.3
6130.0100	10	3	12.5	438	10	4	410	171	738	69	9.8
6130.0200	20	3	25	438	10	8	645	215	1002	156	19.6
6130.0300	30	3	37.5	442	10	10	710	398	1050	237	23.9

Material handling equipment

613P - Chain block with overload protection



Description:

- Overload protection is standard on all GRIPTON 613P series blocks and is factory set.
- Compact design & light weight for ease of use
- Heat treated shafts, gears, pawl & hooks for enhanced strength
- Forged lifting and suspension hooks, with safety latches
- CE, Serial Number, SWL & H.O.L shown on label and carton
- Complete with safety overload clutch (Limiter)

The overload is integral with the hoist and prevents the operator from overloading the hoist.

When activated, the overload will not allow hoist operation. When the overload is activated, lower the load, if lifting, or release the load, if pulling. Then select a larger capacity hoist, or consult a lifting specialist for another means of operation.

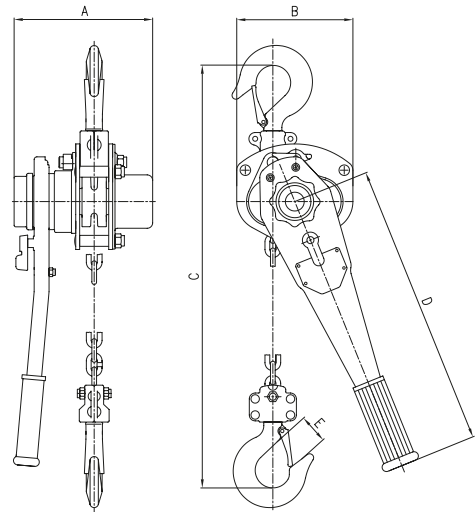
Standard:	EN 13157
Material:	Forged alloy steel
Factor of safety:	4 to 1
Construction:	Quenched & tempered
Proof load:	Individually proof tested to 1.3 – 1.6 times of working load limit (hand wheel slip for overload protection)
Finish:	Powder coated

Chain block with overload protection

Part No.	Rated load (T)	Standard lift (M)	Test load (T)	Effort required at capacity (N)	Load chain diameter (mm)	No. of load chains	A (mm)	B (mm)	C (mm)	Net weight (Kg)	Extra weight per meter of extra lift (Kg)
	2	3	3	330	6	2	156	131	459	16	2
613P.0030	3	3	4.5	402	7.1	2	180	142	536	23	3.2
613P.0050	5	3	7.5	430	10	2	230	171	660	39	5.3
613P.0100	10	3	12.5	438	10	4	410	171	738	69	9.8
613P.0200	20	3	25	438	10	8	645	215	1002	156	19.6

Material handling equipment

6150 - Lever block



Description:

- Compact design & light weight for ease of use
- Heat treated body, shafts & gears for enhanced strength
- Forged lifting and suspension hooks, with safety latches
- Free-wheeling mechanism for quick chain adjustment
- CE, Serial number, SWL & H.O.L shown on label and carton.

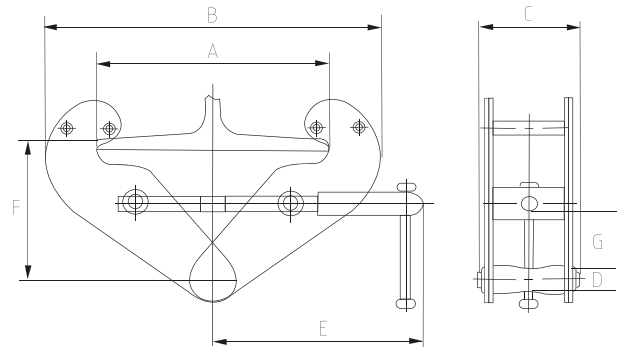
Standard:	EN 13157
Material:	Forged alloy steel
Factor of safety:	4 to 1
Construction:	Quenched & tempered
Proof load:	Individually proof tested to 1.5 time of working load limit
Finish:	Powder coated

Lever block

Part No.	Rated load (T)	Standard lift (M)	Test load (T)	Effort required at capacity (N)	Load chain diameter (mm)	No. of load chains	A (mm)	B (mm)	C (mm)	D (mm)	E (mm)	Min. distance between two hooks	Net weight (Kg)
6150.0075	0.75	1.5	1.125	140	6.00	1	152	128	295	256	26	295	7.7
6150.0150	1.5	1.5	2.25	234	7.10	1	175	148	335	368	30	335	10.6
6150.0300	3	1.5	4.5	363	10	1	195	181	450	368	34	450	20
6150.0600	6	1.5	9	370	10	2	195	232	615	368	47	615	28
6150.0900	9	1.5	13.5	375	10	3	195	366	720	368	64	720	46

Material handling equipment

9050 - Beam clamp



Description:

- Simple and safe attachment point
- Can be attached easily and quickly without the use of any tools
- This clamp provides a suspension point for other lifting gears
- CE, Traceability code, GRIPTON, Jaw opening & WLL mentioned on label

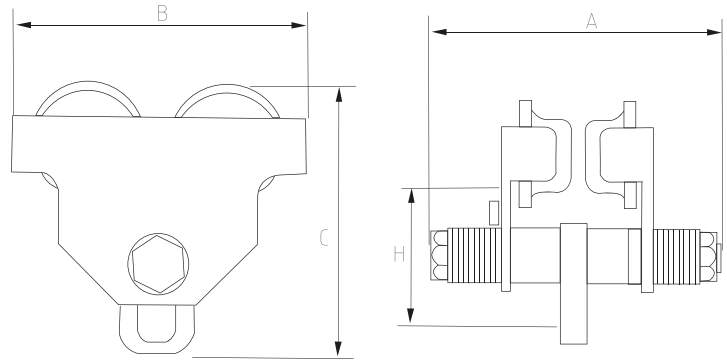
Standard:	EN 12195
Material:	Carbon steel
Factor of safety:	4 to 1
Construction:	Quenched & tempered
Proof load:	Individually proof tested to 1.5 time of working load limit
Finish:	Powder coated

Beam clamp

Part No..	WLL (T)	I beam width range (mm)	A (max) (mm)	B (min) (mm)	B (max) (mm)	C (mm)	E (mm)	F (min) (mm)	F (max) (mm)	G (min) (mm)	D (mm)	Net weight (Kg)
9050.0010	1	75 - 230	284	180	375	4	220	102	160	29	20	4
9050.0020	2	75 - 230	284	180	375	6	220	102	160	28	22	5
9050.0030	3	80 - 320	365	220	498	8	271	168	240	60	24	9
9050.0050	5	90 - 320	365	220	498	10	271	168	240	57	30	11
9050.0100	10	90 - 320	356	250	514	12	280	172	242	55	40	18

Material handling equipment

6500 - Plain trolley



Description:

- Suitable for flat and minor irregular surfaces
- Easy installation
- Suspension eye allows easy connection to hooks and other lifting gears
- CE, Traceability code, WLL & GRIPTON mentioned on label

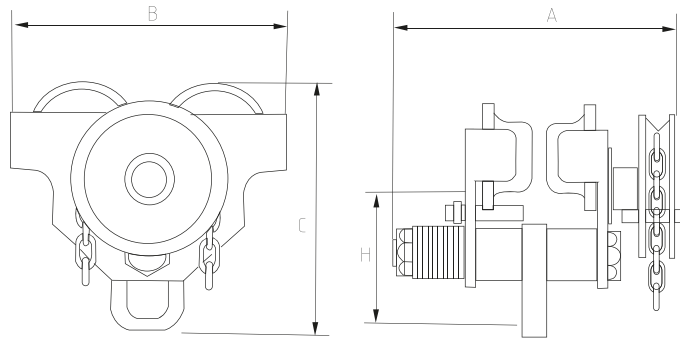
Standard:	EN 12195
Material:	Carbon steel
Factor of safety:	4 to 1
Construction:	Quenched & tempered
Proof load:	Individually proof tested to 1.5 time of working load limit
Finish:	Powder coated

Plain trolley

Part No.	WLL (T)	I beam recommended A (mm)	I beam recommended B (mm)	A (mm)	B (mm)	C (mm)	H (mm)	Net weight (Kg)
6500.0005	0.5	68 - 126	64 - 140	208	196	190	108	5.5
6500.0010	1	80 - 146	64 - 140	242	236	211	115	8.7
6500.0020	2	80 - 168	76 - 165	280	273	236	130	10.4
6500.0030	3	88 - 168	76 - 203	300	320	295	164	24
6500.0050	5	100 - 170	88 - 203	316	366	334	177	36

Material handling equipment

6550 - Geared trolley



Description:

- Suitable for flat and minor irregular surfaces
- Easy installation
- Hand chain drop allows to and fro movement
- Suspension eye allows easy connection to hooks and other lifting gears
- CE, Traceability code, WLL & GRIPTON mentioned on label

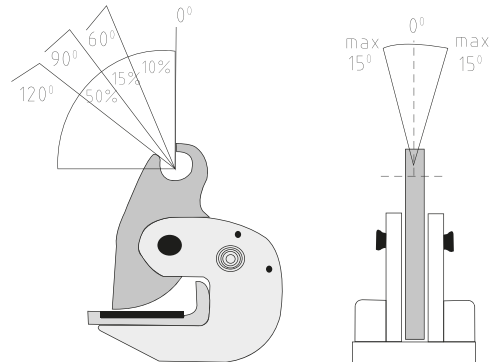
Standard: EN 12195
 Material: Carbon steel
 Factor of safety: 4 to 1
 Construction: Quenched & tempered
 Proof load: Individually proof tested to 1.5 time of working load limit
 Finish: Powder coated

Geared trolley

Part No.	WLL (T)	I beam recommended A (mm)	I beam recommended B (mm)	A (mm)	B (mm)	C (mm)	H (mm)	Net weight (Kg)
6550.0010	1	80 - 146	64 - 140	180	375	4	220	14
6550.0020	2	80 - 168	76 - 165	180	375	6	220	16
6550.0030	3	88 - 168	76 - 203	220	498	8	271	24
6550.0050	5	100 - 170	88 - 203	220	498	10	271	36
6550.0100	10	122 - 203	125 - 203	410	389	460	237	90

Material handling equipment

9010 - Horizontal clamp



Description:

- Designed for transferring, tilting and stacking steel plates in the horizontal plain
- These clamps must always be used in pairs
- CE, Traceability code, WLL, Jaw opening & GRIPTON mentioned in label
- CE, Traceability code, WLL & GRIPTON mentioned on label

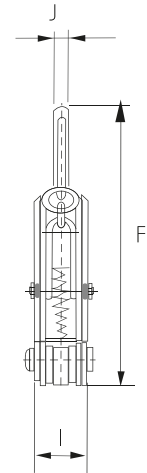
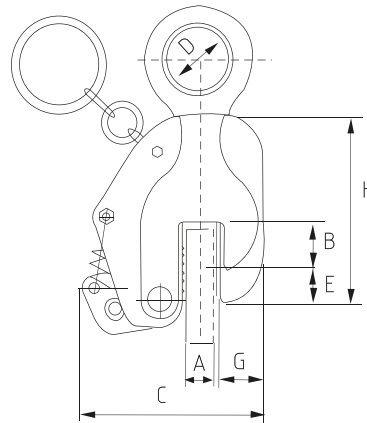
Standard:	EN 12195
Material:	Jaw: Alloy steel, Body: Carbon steel
Factor of safety:	4 to 1
Construction:	Quenched & tempered Jaw
Proof load:	Individually proof tested to 2 times of working load limit
Finish:	Powder coated

Horizontal plate lifting clamp

Part No.	WLL (T) per pair	Jaw opening (mm)	Net weight (Kg)
9010.0010	1	0 - 30	3.5
9010.0015	1.5	0 - 30	4
9010.0020	2	0 - 40	5
9010.0030	3	0 - 45	6
9010.0040	4	0 - 50	6.5
9010.0050	5	0 - 55	7.5
9010.0060	6	0 - 65	10.5
9010.006L	6	0 - 130	22
9010.0080	8	0 - 100	22
9010.0100	10	0 - 125	33

Material handling equipment

9030 - Vertical clamp



Description:

- Designed for vertical plate lifting
- Positive grip with locking mechanism
- CE, Traceability code, WLL, Jaw opening & GRIPTON mentioned in label

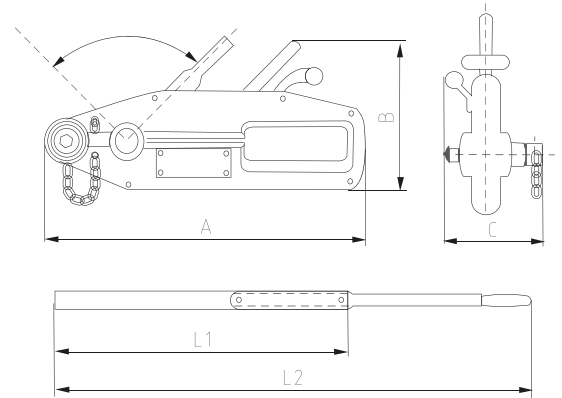
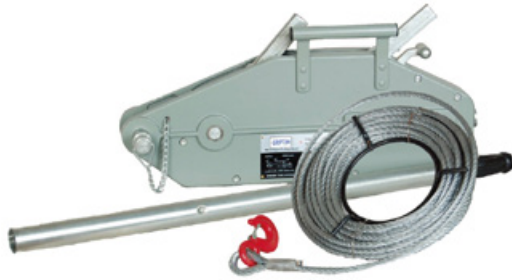
Standard:	EN 12195
Material:	Cam: Alloy steel, Body: Carbon steel
Factor of safety:	4 to 1
Construction:	Quenched & tempered
Proof load:	Individually proof tested to 2 times of working load limit
Finish:	Powder coated

Vertical plate lifting clamp

Part No.	WLL (T)	Jaw opening (mm)	A (mm)	B (mm)	C (mm)	D (mm)	E (mm)	F (mm)	G (mm)	H (mm)	I (mm)	J (mm)	Net weight (Kg)
9030.0010	1	0 - 22	24	33	125	50	24	220 - 260	30	156	54	14	3.6
9030.0020	2	0 - 30	39	45	155	55	30	250 - 295	36	175	60	16	5.5
9030.0030	3	0 - 40	46	49	182	50	36	296 - 360	40	220	72	18	10
9030.0050	5	0 - 50	55	55	222	60	45	350 - 420	60	270	76	18	17
9030.0080	8	0 - 60	70	60	240	65	40	450 - 510	66	275	90	22	26
9030.0100	10	0 - 80	95	75	285	80	45	470 - 590	70	330	95	25	32
9030.0120	12	0 - 90	100	125	360	80	30	500 - 600	90	360	110	25	48

Material handling equipment

5200 - Wire rope pulling hoist



Description:

- Manual puling machine with lever
- Shear pins provide overload protection
- Used for pulling and lifting
- Rope Dia & H.O.L shown on label and carton

Standard: EN 13157

Material: Aluminium

Construction: Quenched & tempered

Proof load: Individually proof tested to 1.5 time of working load limit

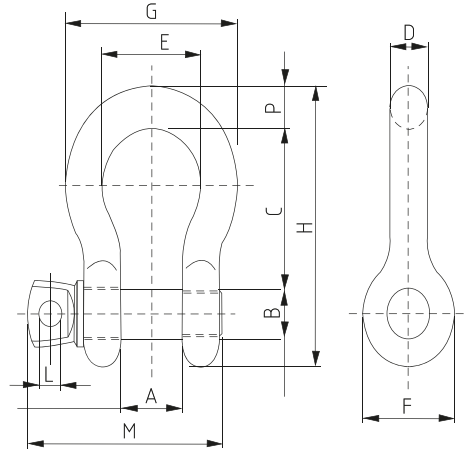
Finish: Powder coated

Wire rope pulling hoist

Part No.	Rated capacity (T)	Standard rope length (M)	Rope diameter	Effort required at capacity	Wire rope safety factor load capacity	Safety factor & static load capacity	Max. travelling load	A (mm)	B (mm)	C (mm)	L1 (mm)	L2 (mm)	Net weight (Kg)
5200.0080	0.80	20.00	8.30	341.00	5.00	5.00	≥ 52	426.00	238.00	64.00	80.00	80.00	14.60
5200.0160	1.60	20.00	11.00	438.00	5.00	5.00	≥ 55	545.00	284.00	97.00	80.00	120.00	26.40
5200.0320	3.2	20.00	16.00	438.00	5.00	5.00	≥ 28	660.00	325.00	116.00	80.00	120.00	49.30
5200.0540	5.40	20.00	20	745	6	6	≥ 30	930	480.00	152.00	80.00	120.00	98.00

Shackles

5100 - Screw pin bow shackle



Description:

- Designed for frequent, non permanent applications
- Suitable for overhead lifting
- CE, Traceability code, Grade, Size, WLL & GRIPTON or GPT embossed

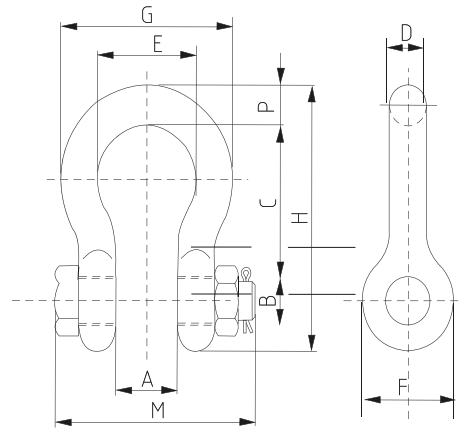
Standard:	US federal specification RR-C-271 D
Material:	Body: Forged Carbon Steel, Pin: Alloy Steel
Factor of safety:	6 to 1
Construction:	Quenched & tempered
Proof load:	Individually proof tested to 2 times of working load limit
Finish:	Body: Hot dip galvanised, Pin: Powder coated

Screw pin bow shackle

Part No.	Size (in)	WLL (T)	A (in)	B (in)	C (in)	D (in)	F (in)	G (in)	H (in)	L (in)	M (in)	P (in)	Weight (lbs)
5100.0005	1/4"	0.5	0.51	0.31	1.14	0.27	0.79	0.69	1.30	1.90	0.16	1.50	0.1
5100.0007	5/16"	0.75	0.53	0.37	1.22	0.31	0.85	0.83	1.48	2.14	0.20	1.67	0.19
5100.0010	3/8"	1.00	0.67	0.44	1.44	0.39	1.03	0.98	1.81	2.54	0.22	2.11	0.31
5100.0015	7/16"	1.50	0.73	0.50	1.69	0.44	1.16	1.06	2.03	2.90	0.24	2.32	0.38
5100.0020	1/2"	2.00	0.81	0.62	1.88	0.50	1.31	1.22	2.32	3.31	0.30	2.76	0.72
5100.0032	5/8"	3.25	1.06	0.75	2.36	0.63	1.69	1.57	2.95	4.15	0.35	3.44	1.37
5100.0047	3/4"	4.75	1.26	0.87	2.81	0.75	2.01	1.89	3.50	4.94	0.39	3.98	2.35
5100.0065	7/8"	6.50	1.46	0.98	3.33	0.87	2.28	2.13	4.02	5.75	0.41	4.57	3.62
5100.0085	1"	8.50	1.71	1.10	3.79	1.04	2.70	2.36	4.67	6.51	0.47	5.33	5.03
5100.0095	1-1/8"	9.50	1.89	1.26	4.29	1.14	2.95	2.68	5.24	7.40	0.59	5.71	7.41
5100.0120	1-1/4"	12.00	2.09	1.38	4.74	1.26	3.31	2.99	5.83	8.19	0.65	6.30	9.5
5100.0135	1-3/8"	13.50	2.32	1.50	5.28	1.38	3.70	3.31	6.46	9.06	0.75	7.01	13.53
5100.0170	1-1/2"	17	2.44	1.65	5.85	1.50	3.90	3.62	6.89	9.98	0.83	7.64	17.2
5100.0250	1-3/4"	25	2.95	1.97	7.01	1.77	5.04	4.17	8.62	11.87	0.91	8.98	27.78
5100.0350	2"	35	3.31	2.20	7.76	2.05	5.83	4.80	9.92	13.31	0.98	10.04	45
5100.0550	2-1/2"	55	4.21	2.76	10.61	2.60	7.32	5.71	12.52	17.44	1.30	12.48	85.75

Shackles

5150 - Nut & bolt bow shackle



Description:

- Recommended for long term and permanent applications
- Enhanced safety with nut and cotter pin
- Suitable for overhead lifting
- CE, Traceability code, Grade, Size, WLL & GRIPTON or GPT embossed

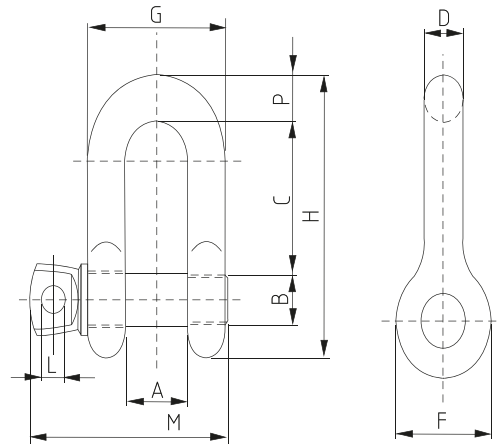
Standard: US federal specification RR-C-271 D
 Material: Body: Forged carbon steel, Pin: Alloy steel
 Factor of safety: 6 to 1
 Construction: Quenched & tempered
 Proof load: Individually proof tested to 2 times of working load limit
 Finish: Body: Hot dip galvanized, Pin: Powder coated

Nut & bolt bow shackle

Part No.	Size (in)	WLL (T)	A (in)	B (in)	C (in)	D (in)	F (in)	G (in)	H (in)	L (in)	M (in)	P (in)	Weight (lbs)
5150.0005	1/4"	0.5	0.51	0.31	1.14	0.27	0.79	0.69	1.30	1.90	1.67	0.27	0.11
5150.0007	5/16"	0.75	0.53	0.37	1.22	0.31	0.85	0.83	1.48	2.14	1.89	0.31	0.22
5150.0010	3/8"	1.00	0.67	0.44	1.44	0.39	1.03	0.98	1.81	2.54	2.26	0.39	0.33
5150.0015	7/16"	1.50	0.73	0.50	1.69	0.44	1.16	1.06	2.03	2.90	2.54	0.43	0.49
5150.0020	1/2"	2.00	0.81	0.62	1.88	0.50	1.31	1.22	2.32	3.31	2.93	0.50	0.79
5150.0032	5/8"	3.25	1.06	0.75	2.36	0.63	1.69	1.57	2.95	4.15	3.66	0.63	1.68
5150.0047	3/4"	4.75	1.26	0.87	2.81	0.75	2.01	1.89	3.50	4.94	4.21	0.75	2.72
5150.0065	7/8"	6.50	1.46	0.98	3.33	0.87	2.28	2.13	4.02	5.75	4.76	0.87	3.95
5150.0085	1"	8.50	1.71	1.10	3.79	1.04	2.70	2.36	4.67	6.51	5.39	0.98	5.66
5150.0095	1-1/8"	9.50	1.89	1.26	4.29	1.14	2.95	2.68	5.24	7.40	5.71	1.14	8.27
5150.0120	1-1/4"	12.00	2.09	1.38	4.74	1.26	3.31	2.99	5.83	8.19	6.57	1.26	11.71
5150.0135	1-3/8"	13.50	2.32	1.50	5.28	1.38	3.70	3.31	6.46	9.06	7.28	1.38	15.83
5150.0170	1-1/2"	17	2.44	1.65	5.85	1.50	3.90	3.62	6.89	9.98	7.80	1.50	20.8
5150.0250	1-3/4"	25	2.95	1.97	7.01	1.77	5.04	4.17	8.62	11.87	8.94	1.77	33.91
5150.0350	2"	35	3.31	2.20	7.76	2.05	5.83	4.80	9.92	13.31	9.84	2.05	52.25
5150.0550	2-1/2"	55	4.21	2.76	10.61	2.60	7.32	5.71	12.52	17.44	11.77	2.64	98.25
5150.0850	3"	85	5	3.3	13	3.12	7.88	6.5	14.62	21.5	15.55	3.62	154.0
5150.1200	3-1/2"	120	5.25	3.76	15.63	3.62	9	8	17.02	24.88	18.2	4.38	265.0
5150.1500	4"	150	5.5	4.26	14.5	4	10	9	18	25.68	19.84	4.56	338.0

Shackles

5300 - Screw pin D shackle



Description:

- Designed for frequent, non permanent applications
- Suitable for overhead lifting
- CE, Traceability code, Grade, Size, WLL & GRIPTON or GPT embossed

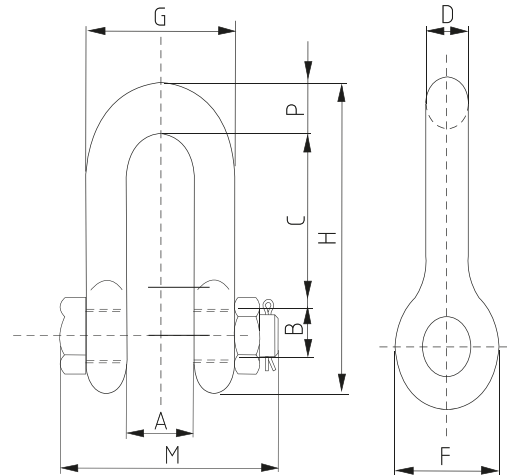
Standard: US federal specification RR-C-271 D
 Material: Body: Forged carbon steel, Pin: Alloy steel
 Factor of safety: 6 to 1
 Construction: Quenched & tempered
 Proof load: Individually proof tested to 2 times of working load limit
 Finish: Body: Hot dip galvanised, Pin: Powder coated

Screw pin D shackle

Part No.	Size (in)	WLL (T)	A (in)	B (in)	C (in)	D (in)	F (in)	G (in)	H (in)	L (in)	M (in)	P (in)	Weight (lbs)
5300.0005	1/4"	0.5	0.51	0.31	0.87	0.27	0.69	1.02	1.62	0.16	1.50	0.26	0.11
5300.0007	5/16"	0.75	0.53	0.37	1.00	0.31	0.83	1.16	1.92	0.20	1.67	0.31	0.17
5300.0010	3/8"	1.00	0.67	0.44	1.22	0.39	0.98	1.46	2.32	0.22	2.11	0.39	0.28
5300.0015	7/16"	1.50	0.73	0.50	1.43	0.43	1.06	1.59	2.65	0.24	2.32	0.43	0.43
5300.0020	1/2"	2.00	0.81	0.62	1.63	0.50	1.22	1.81	3.03	0.30	2.76	0.50	0.59
5300.0032	5/8"	3.25	1.06	0.75	2.01	0.63	1.57	2.32	3.80	0.35	3.44	0.63	1.25
5300.0047	3/4"	4.75	1.26	0.87	2.48	0.75	1.89	2.83	4.65	0.39	3.98	0.79	2.63
5300.0065	7/8"	6.50	1.46	0.98	2.83	0.87	2.13	3.23	5.28	0.41	4.57	0.89	3.16
5300.0085	1"	8.50	1.71	1.10	3.22	0.98	2.36	3.68	5.94	0.47	5.33	0.98	4.75
5300.0095	1-1/8"	9.50	1.89	1.26	3.70	1.14	2.68	4.17	6.81	0.59	5.71	1.14	6.75
5300.0120	1-1/4"	12.00	2.09	1.38	4.02	1.26	2.99	4.61	7.46	0.65	6.30	1.26	9.06
5300.0135	1-3/8"	13.50	2.32	1.50	4.47	1.38	3.31	5.08	8.25	0.75	7.01	1.38	11.63
5300.0170	1-1/2"	17	2.44	1.61	4.84	1.50	3.62	5.43	8.98	0.83	7.64	1.50	15.95
5300.0250	1-3/4"	25	2.95	1.97	5.83	1.77	4.17	6.50	10.67	0.91	8.98	1.77	26.75
5300.0350	2"	35	3.31	2.20	6.85	2.05	4.80	7.32	12.36	0.98	10.04	2.01	42.31
5300.0550	2-1/2"	55	4.21	2.76	8.09	2.64	5.71	9.49	14.96	1.30	12.48	2.64	71.75

Shackles

5350 - Nut & bolt D shackle



Description:

- Recommended for long term and permanent applications
- Enhanced safety with nut and cotter pin
- Suitable for overhead lifting
- CE, Traceability code, Grade, Size, WLL & GRIPTON or GPT embossed

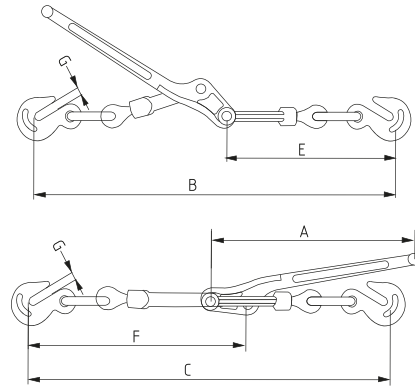
Standard:	US federal specification RR-C-271 D
Material:	Body: Forged carbon steel, Pin: Alloy steel
Factor of safety:	6 to 1
Construction:	Quenched & tempered
Proof load:	Individually proof tested to 2 times of working load limit
Finish:	Body: Hot dip galvanized, Pin: Powder coated

Nut & bolt D shackle

Part No.	SIZE (in)	WLL (T)	A (in)	B (in)	C (in)	D (in)	F (in)	G (in)	H (in)	M (in)	P (in)	Weight (lbs)
5350.0005	1/4"	0.5	0.51	0.31	0.87	0.27	0.69	1.02	1.62	1.67	0.26	0.13
5350.0007	5/16"	0.75	0.53	0.37	1.00	0.31	0.83	1.16	1.92	1.89	0.31	0.23
5350.0010	3/8"	1.00	0.67	0.44	1.22	0.39	0.98	1.46	2.32	2.26	0.39	0.33
5350.0015	7/16"	1.50	0.73	0.50	1.43	0.43	1.06	1.59	2.65	2.54	0.43	0.49
5350.0020	1/2"	2.00	0.81	0.62	1.63	0.50	1.22	1.81	3.03	2.93	0.50	0.75
5350.0032	5/8"	3.25	1.06	0.75	2.01	0.63	1.57	2.32	3.80	3.66	0.63	1.47
5350.0047	3/4"	4.75	1.26	0.87	2.48	0.75	1.89	2.83	4.65	4.21	0.79	2.52
5350.0065	7/8"	6.50	1.46	0.98	2.83	0.87	2.13	3.23	5.28	4.76	0.89	3.85
5350.0085	1"	8.50	1.71	1.10	3.22	0.98	2.36	3.68	5.94	5.39	0.98	5.55
5350.0095	1-1/8"	9.50	1.89	1.26	3.70	1.14	2.68	4.17	6.81	5.71	1.14	7.6
5350.0120	1-1/4"	12.00	2.09	1.38	4.02	1.26	2.99	4.61	7.46	6.57	1.26	10.81
5350.0135	1-3/8"	13.50	2.32	1.50	4.47	1.38	3.31	5.08	8.25	7.28	1.38	13.75
5350.0170	1-1/2"	17	2.44	1.65	4.84	1.50	3.62	5.43	8.98	7.80	1.50	18.5
5350.0250	1-3/4"	25	2.95	1.97	5.83	1.77	4.17	6.50	10.67	8.94	1.77	31.4
5350.0350	2"	35	3.31	2.20	6.85	2.05	4.80	7.32	12.36	9.84	2.01	46.75
5350.0550	2-1/2"	55	4.21	2.76	8.09	2.64	5.71	9.49	14.96	11.77	2.64	85

Cargo securing equipment

3100 - Load binder lever type



Description:

- Designed for heavy duty transport use
- Equipped with grab hooks for easy one handed connection to loosen or tighten chain
- Heavier construction at leverage point prevents spreading
- CE, Traceability code, GRIPTON embossed

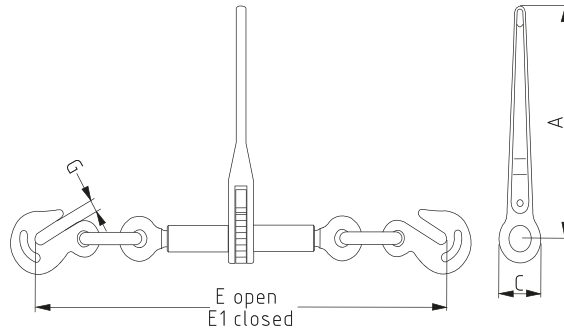
Standard:	EN 12195
Material:	Hook: Alloy steel, Body: Forged carbon steel
Factor of safety:	3.5 to 1
Construction:	Quenched & tempered
Proof load:	Individually proof tested to 2 times of working load limit
Finish:	powder coated

Load binder lever type

Part No.	Size	WLL (lbs)	MBL (lbs)	A (in)	B (in)	C (in)	E (in)	F (in)	G (in)	Net weight (lbs)
3100.0810	5/16" - 3/8"	5400	19000	15.75	23.90	19.80	11.30	11.22	0.50	7.93
3100.1013	3/8" - 1/2"	9200	33000	17.36	27.36	22.24	12.80	12.76	0.65	12.56
3100.1316	1/2" - 5/8"	13000	46000	20.39	33.39	27.36	15.55	15.39	0.73	20.26

Cargo securing equipment

3150 - Load binder ratchet type



Description:

- Designed for heavy duty transport use
- Ratchet handle allows infinite adjustment and continuous take-up
- Short reach hooks allow for maximum take-up
- CE, Traceability code, GRIPTON embossed

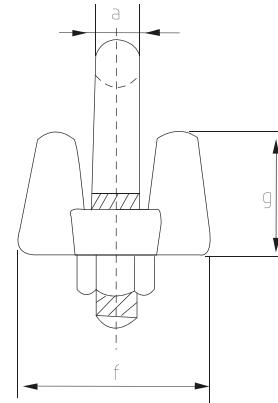
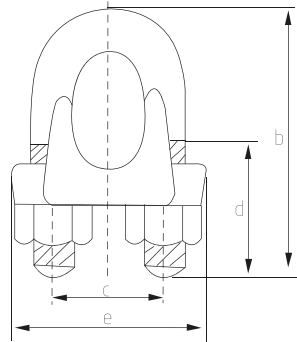
Standard:	EN 12195
Material:	Forged carbon steel
Factor of safety:	3.5 to 1
Construction:	Quenched & tempered
Proof load:	Individually proof tested to 2 times of working load limit
Finish:	Powder coated

Load binder ratchet type

Part No.	Size	WLL (lbs)	MBL (lbs)	A (in)	C (in)	E (in)	E1 (in)	G (in)	Net weight (lbs)
3150.0810	5/16" - 3/8"	5400	19000	13.98	2.56	22.95	29.29	0.50	10.36
3150.1013	3/8" - 1/2"	9200	33000	13.98	2.56	23.74	30.24	0.65	11.24
3150.1316	1/2" - 5/8"	13000	46000	13.98	2.56	27.17	33.86	0.73	15.83

Wire rope accessories

4100 - Wire rope clip



Description:

- Wire rope clips are used on wire rope eye connections when socketing or mechanical splicing is not feasible or when a temporary joint is required.

Standard: Conforming to federal specification FF – C 450 type 1 class 1.

Material: Forged carbon steel

Finish: Hot dip galvanised

Galvanised drop forged wire rope clips

Part No.	A (mm)	B (mm)	C (mm)	D (mm)	E (mm)	F (mm)	G (mm)	Torque (Nm)	Min. No. of clips	Net weight (Kg)
4100.0006	8	34	19	13	37	30	17	20.3	2	0.09
4100.0008	10	45	22	19	43	33	18	40.7	3	0.13
4100.0010	11	49	26	19	49	42	25	61	3	0.2
4100.0013	13	61	30	26	58	48	27	88	3	0.33
4100.0016	14	74	33	32	64	52	33	129	3	0.46
4100.0019	16	86	38	37	72	57	37	176	4	0.68
4100.0022	19	98	45	40	80	62	40	305	4	0.96
4100.0026	19	108	48	46	88	67	44	305	5	1.18
4100.0028	19	117	51	51	91	72	48	305	6	1.28
4100.0032	22	130	59	54	105	79	56	488	7	1.9
4100.0036	22	140	60	59	108	79	58	488	7	2
4100.0038	22	147	66	60	112	86	64	488	8	2.35
4100.0042	22	161	70	67	121	92	67	583	8	3.1
4100.0044	29	175	78	74	134	97	78	800	8	4.2
4100.0052	32	195	86	78	152	113	87	1017	8	5.8
4100.0056	32	208	98	81	162	116	100	1017	8	7.3
4100.0064	32	227	105	87	168	119	113	1017	9	8.25
4100.0070	32	243	112	91	174	127	124	1017	10	10.5
4100.0076	38	271	121	104	194	135	136	1627	10	14.2
4100.0088	38	311	140	114	213	157	152	1627	12	18.1

Webbing slings

2150 - Polyester webbing slings



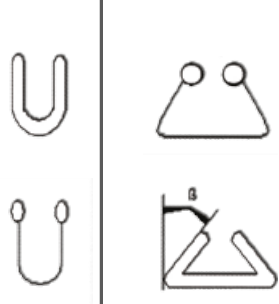

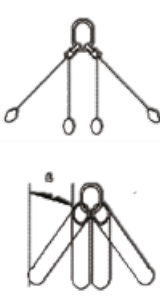
Webbing slings are available from 25mm to 300mm width & 500kg to 24,000kg capacity, although higher capacity slings can be made as per requirement.

Additional to becket eyes (soft), reverse, flat & leather protected eyes are available. Moreover wear sleeves can be fitted as per customer requirement.

EN 1492 standard is used during manufacturing, inspection and testing of all our webbing fittings slings.

Safety factor of 7:1 (excl. when fitted with steel end fittings where it is 4:1)

Certification provided with all webbing slings products and flat woven webbing slings (polyester) with soft eyes also available.

Webbing slings										
WLL of sewn webbing components	Color of sewn webbing components	Straight lift (T)	Choked lift (T)	Basket hitch (T)			Two leg slings (T)		Three & four leg slings (T)	
										
				Parallel	$\beta = 0^{\circ}$ to 45°	$\beta = 45^{\circ}$ to 60°	$\beta = 0^{\circ}$ to 45°	$\beta = 45^{\circ}$ to 60°	$\beta = 0^{\circ}$ to 45°	$\beta = 45^{\circ}$ to 60°
		M=1	M=0.8	M=2	M=1.4	M=1	M=1.4	M=1	M=2.1	M=1.5
1.0	Violet	1.0	0.8	2.0	1.4	1.0	1.4	1.0	2.1	1.5
2.0	Green	2.0	1.6	4.0	2.8	2.0	2.8	2.0	4.2	3.0
3.0	Yellow	3.0	2.4	6.0	4.2	3.0	4.2	3.0	6.3	4.5
4.0	Grey	4.0	3.2	8.0	5.8	4.0	5.8	5.8	8.1	8.0
5.0	Red	5.0	4.0	10.0	7.0	5.0	7.0	7.0	10.5	7.5
6.0	Brown	6.0	4.8	12.0	8.4	6.0	8.4	8.4	12.8	9.0
8.0	Blue	8.0	6.4	16.0	11.2	8.0	11.2	11.2	16.8	12.0
10.0	Orange	10.0	8.0	20.0	14.0	10.0	14.0	14.0	21.0	15.0
Over 10	Orange									

Contacts

Authorized distributors in Gulf region

DUTEST INDUSTRIAL EST.

P.O. Box 5389, Dubai, UAE.

Tel: +971 4 806 7700 Fax: +971 4 806 7701

Email: dutest@bindasmal.com Web: www.dutest.com

United Arab Emirates

SAUDI DUTEST INDUSTRIAL CO. LLC.

P.O. Box 11969, Postal Code 31961, Al Jubail Industrial City, KSA.

Tel: +966 3 341 7222 Fax: +966 3 341 7333

Email: saudidutest@bindasmal.com Web: www.dutest.com

Kingdom of Saudi Arabia

KHALIFA DASMAL TRADING WLL.

PO Box : 32425, Doha, Qatar.

Tel: + 974 4 475 6013 Fax: +974 4 475 6014

Email: bindasmalgroup@bindasmal.com Web: www.bindasmal.com

State of Qatar

DASMAL TRADING CO. LLC.

P.O. Box 1084, Postal Code 130, Gala, Muscat, Sultanate of Oman.

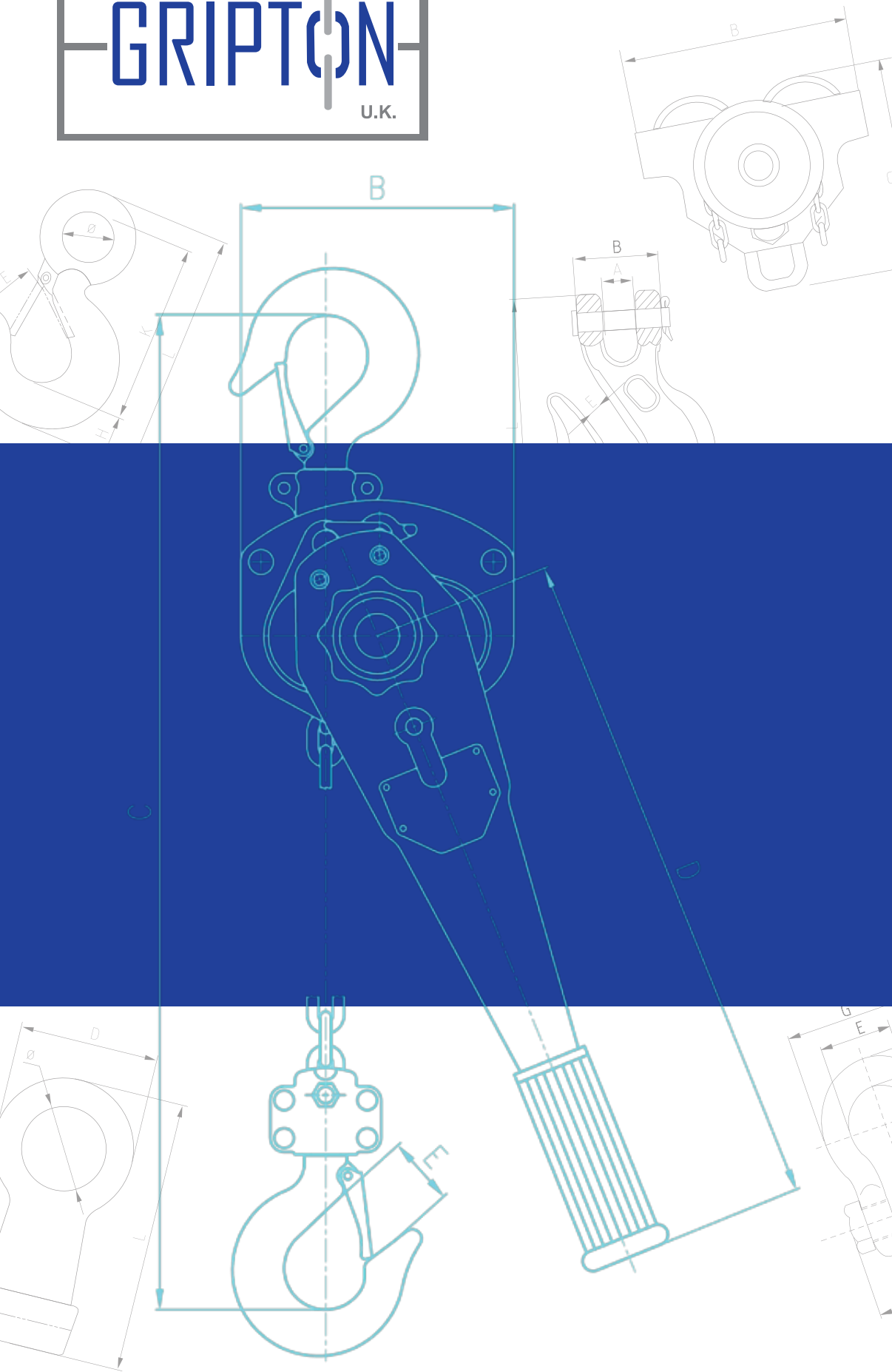
TEL: +968 2 459 5996 Fax: +968 2 459 0012

Email: trading@bindasmal.com Web: www.bindasmal.com

Sultanate of Oman

GRIPTON LIFTING GEAR LLP.
W1S1YH, London, United Kingdom.

TM



www.gripton.co.uk

Gripton Lifting Gear LLP. UK.

GPT/R0/June/2012